



# MONTHLY MEMBERSHIP PROGRESS REPORT

District 5M 13

Results as of: 06/30/2018

GMT: GORDON ZIEGLER

LOCATION MANITOBA

GMT CA

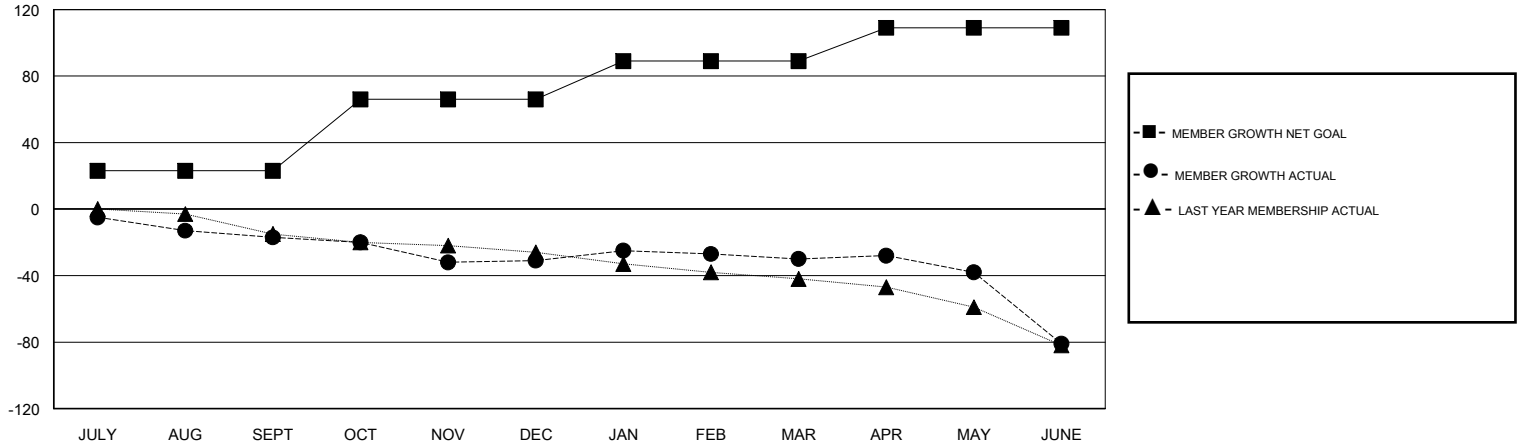
Clubs			
RESULTS FOR 2017-2018			
QUARTER	NEW CLUB GOAL	NEW CLUBS	DROPPED CLUBS
JULY/AUG/SEPT	0	0	1
OCT/NOV/DEC	1	0	0
JAN/FEB/MAR	0	0	0
APR/MAY/JUNE	0	0	3

Members			
RESULTS FOR 2017-2018			
QUARTER	MEMBER GROWTH NET GOAL	MEMBER GROWTH ACTUAL	DROPPED MEMBERS ACTUAL (including transfers)
JULY/AUG/SEPT	23	2	17
OCT/NOV/DEC	43	22	31
JAN/FEB/MAR	23	24	19
APR/MAY/JUNE	20	28	77

GOALS AND ACTUAL NEW CLUBS CUMULATIVE



GOALS AND ACTUAL MEMBERS CUMULATIVE



DROPPED CLUBS: 4	25 CLUBS OF 54 ADDED 1 OR MORE NEW MEMBERS	<u>GENDER DISTRIBUTION</u>	
		MALE	779 (76.90%)
		FEMALE	234 (23.10%)
		Women Percentage Fiscal Year Goal: 25%	
<u>DROPPED MEMBERS</u>		TOTAL FAMILY UNIT MEMBERS	0
DECEASED	9	FAMILY MEMBERS PAYING HALF DUES	0
CLUB CANCELLED	28		
OTHER	107		
TOTAL	144		

[CLICK HERE FOR CUMULATIVE MEMBERSHIP DATA](#)